



# BorderGuard® RemoteLink 15

*Secure Any Ethernet Device on Any Network – Public or Private*

The Blue Ridge BorderGuard RemoteLink is a plug-and-play desktop device that works with any communication medium to secure devices to the rest of the enterprise. RemoteLink supports laptop computers, Voice over IP (VoIP) phones, bar-code readers, video conferencing systems, and any Ethernet device with operating systems such as Windows, Mac or Linux. Because RemoteLink works over any public or private network, it eliminates dependence on multiple carriers and the need to manage wide area network protocols.

**Replace Frame Relay** – if it works over Frame Relay, it works over RemoteLink. Both provide protocol-independent Layer 2 wide-area connectivity, but RemoteLink improves Frame Relay in other areas:

- Reliability – leverages the Internet and supports automatic failover
- Mobility – end-users can relocate a RemoteLink without IT involvement
- Security – secure connections established end-to-end
- Affordability – customers leverage broadband Internet services of any type in any combination
- Throughput – supports individual connections with higher bandwidth than existing Frame Relay networks
- Flexibility – any combination of carrier services can be used
- Scalability – can grow without major equipment upgrades

**Secure connectivity from the field** – perfect for highly mobile users using a variety of connection media including satellite transmission

**All Ethernet protocols available** – use the RemoteLink to connect mobile workers or telecommuters who use Windows PC, Apple Macs, or Linux-based machines

**Enable desktop access separation** – participate in local or remote secure enclaves from a desktop within any LAN

**Instantly set up a remote office** – the RemoteLink usually requires no end-user configuration

**Ensure disaster preparedness** – connect all remote offices to one or more central sites in normal operation, change to a backup site automatically

- Small (6.2 in x 6.6 in) and Lightweight (under 1 lb)
- Secures any Ethernet device
- No software to install
- Dynamic configuration via subscription
- Simple and effective redundancy, scalability
- Transparent to end users
- No risk of compromising security if lost or stolen
- Versatile and mobile:
  - SOHO, branch offices
  - Mobile worker teams
  - Bank branches
  - Secure ATM networks
  - Emergency response
  - Telework
  - Continuity of operations

**TIME TESTED SECURITY**

RemoteLink is immune to attacks, enabling worry-free communications over any trusted or untrusted network including broadband and satellite connections.

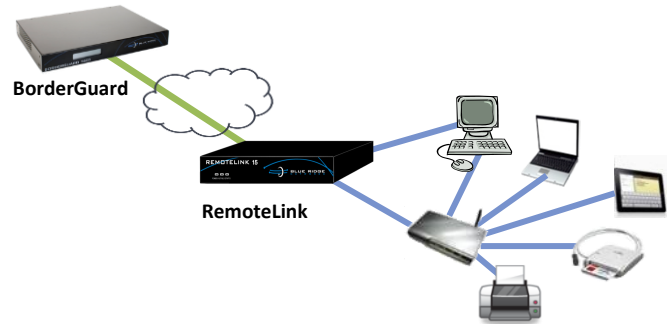
RemoteLink does not store cryptographic information or network details. Because all network credentials are stored on the USB Security Token, the network will not be compromised if a RemoteLink is lost or stolen. If necessary, the USB Security Token's credentials can be suspended or deleted instantly by the system administrator.

Blue Ridge's BorderGuard technology has many 100% successful certifications and validations, including JITC DoD PKI, Army TIC, FIPS 140-2, and PKCS#11 SmartCard. Since 1994, security conscious global enterprises have trusted BorderGuard products and services to protect their intellectual property and high-security communications.

**USING BORDERGUARD REMOTELINK**

Simply connect the RemoteLink to the computer or other device and insert the administrator-generated Security Token into a USB port on the front of the RemoteLink. Power on the device and it will instantly establish a secure tunnel to the approved destination as defined by the administrator, usually at an enterprise data center or headquarters location.

No end-user configuration of the RemoteLink is needed for most system configurations. Removing the Security Token will terminate the secure session associated with that Token.



# BORDERGUARD REMOTELINK SPECIFICATIONS

MODEL	PORTS	MAX. AES 256 THROUGHPUT	MAX. RSA KEYS	CONCURRENT TUNNELS
RemoteLink 15	(3) Gigabit Ethernet (RJ-45)	75 Mbps	4096	2

<p><b>DATA INTEGRITY</b></p> <ul style="list-style-type: none"> <li>SHA-256</li> <li>HMAC SHA-1</li> </ul>	<p><b>DEVICE IP ASSIGNMENT</b></p> <ul style="list-style-type: none"> <li>Dynamic</li> <li>Static</li> </ul>	<p><b>PHYSICAL</b></p> <ul style="list-style-type: none"> <li>Length 6.6 in.</li> <li>Width 6.2 in.</li> <li>Height 1.2 in.</li> <li>Weight 0.9 lbs.</li> </ul>
<p><b>ENCRYPTION ALGORITHMS</b></p> <ul style="list-style-type: none"> <li>AES 128, 192, 256</li> </ul>	<p><b>POWER</b></p> <ul style="list-style-type: none"> <li>12V 2A Inline AC adapter</li> </ul>	<p><b>ENVIRONMENTAL</b></p> <ul style="list-style-type: none"> <li>Temperature 32° to 104° F (0° to 40° C)</li> <li>Humidity 0% to 90% @ 40° C (non-condensing)</li> </ul>
<p><b>PUBLIC KEY CRYPTOGRAPHY</b></p> <ul style="list-style-type: none"> <li>RSA and Diffie-Hellman</li> <li>512,1024,2048,4096 RSA keys</li> </ul>	<p><b>DISPLAY</b></p> <ul style="list-style-type: none"> <li>LED indicators, front</li> </ul>	